



GEF Co., Ltd. Company Profile



<http://www.newgef.co.kr>

Global Engineering Family

COMPANY SLOGAN

MORE AFRESH
MORE VIGOROUSLY
MORE SMART
GEF people of professional with ownership

1. About Us

2. Major Business

**3. Business
Professionalism**

1. About Us



GEF is company, composed of experts in each area, and specializes in total semiconductor solution.

All employees working for GEF with passion, creativity, and technical skills make a lot of effort continuously for the prompt and professional handling of work, from the sale of used equipments for all semiconductor processes supply of parts, on the basis of a diligent attitude and ample technique.

Based on stable technical skills, we, GEF, promise that we serve as the best partner in technically cooperating with other companies in the field and enhancing our partners' performance, staying humble, so as to develop GEF into a company that can satisfy customers' needs aggressively in the future, obtaining the best results in the field of each area.

1. About Us (Company Profile)

■ Company	GEF Co., Ltd.
■ CEO	Song Moon Ki
■ Date of establishment	May 06, 2016
■ Capital	50 million won
■ Number of Employees	Korea 18 people
■ Business Area	Equipment / Part Sales & Up-grade

1. About Us (Location)

■ Head Office

96, Dongbu-daero, Jinwi-myeon, Pyeongtaek-si, Gyeonggi-do, Republic of Korea
TEL. +82-31-221-8400, FAX. +82-505-960-9746

■ Sales Office

27, Dongtancheomdansaneop 1-ro, Hwaseong-si, Gyeonggi-do, Republic of Korea
Geumgang Penterium IX Tower B Building 3429



1. About Us (Sales Office)

Inside the office, there are sales and accounting departments

Its main business is the sale of equipment and parts, which can be divided into re-export trade, export trade, import trade and intermediary trade.

Global Engineering Family



1. About Us (Head Office)

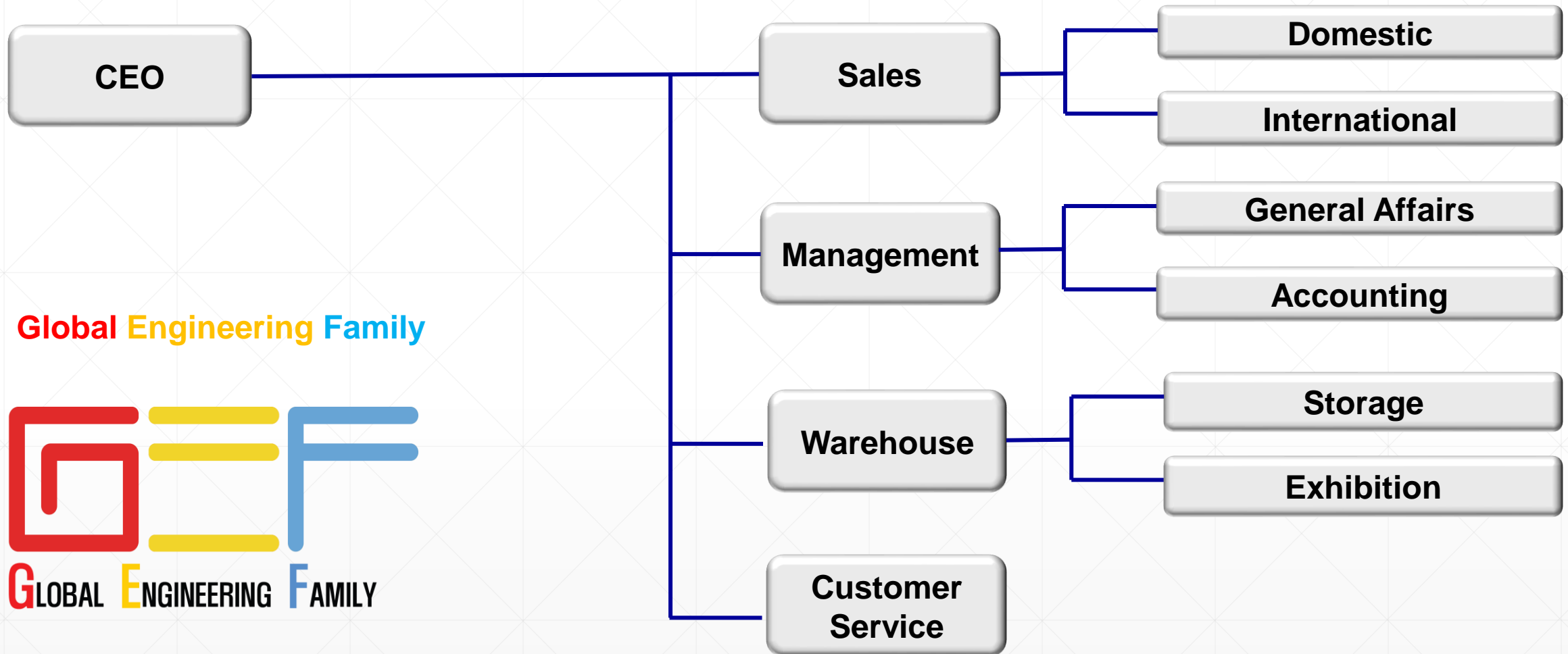
The company warehouse and management office are located together

The warehouse is used to store the company's equipment and provide exhibition services to customers.

Global Engineering Family



1. About Us (Company Organizational Structure)

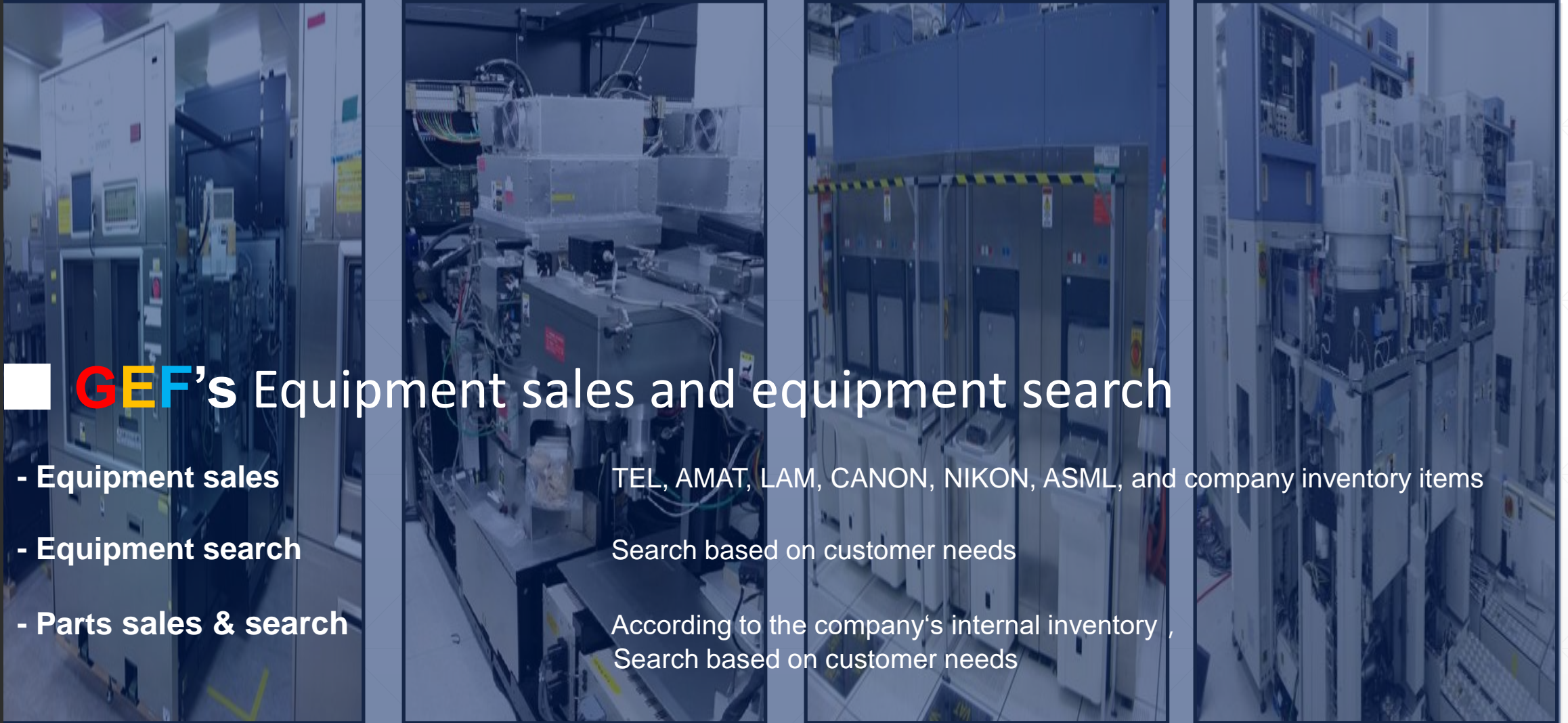


1. About Us

■ Company History

- 2016.05 Founded GEF Co.,LTD
 - 06 Tower Jazz De-install Turn-key
 - 08 Founded Nishiwaki-Japan warehouse
 - 09 Founded Tokyo Office
- 2017.02 Registration of Korea International Trade Association
 - 07 SONY Nagasaki De-install / Management turn-key
 - 08 Skyworks Nikon Stepper Install(2017~)
 - 10 SONY Kagoshima Set-up / Management
- 2018.03 Founded R&D Center
 - 07 Renesas Kochi De-install / Management turn-key
 - 09 Registration of ISO900:2008(ICR)
 - 10 Founded Osaka Office
 - 12 Reach \$1,000,000 export
- 2019. 04 Sharp Fukuyama De-install / Management turn-key
 - 05 Micron Hiroshima De-install / Management(2019~)
- 2020. 02 Micron Hiroshima De-install / Management
 - 06 SK Hynix TEL Telius O-Ring Overhaul
 - 07 Founded Pyeongteck-Korea Warehouse
 - 11 Samsung Implanta machine / De-install
 - 12 Founded Yongin-Korea Cleanroom
- 2021. 02 SK Hynix TEL Telius O-Ring Overhaul
 - 05 SK Hynix TEL VIGUS machine / De-install
 - 08 Founded Dongtan-Korea Office
 - 11 Micron Hiroshima De-install / Management
 - 12 VIS TEL Unity DRM Refurbish
- 2022. 01 ICD LAM FLEX45 Refurbish, SET UP
 - 05 SK Hynix TEL MB2 machine / De-install
 - 06 株式会社 Kawasaki TEL Telius SET UP
 - 10 GIGALANE DISCO DAD-521 Refurbish, SET UP
 - 11 Micron Hiroshima De-install / Management
- 2023. 01 JAPAN KIOXIA TEL Track Engineering
 - 04 JAPAN KIOXIA Semvision,Puma Engineering
 - 08 JAPAN NUVOTON UOZ-TE8500&IW6Engineering
 - 10 TAIWAN SE-TECH UNITY DRM TROUBLE SHOOTING
 - 11 Micron Hiroshima De-install / Management

2-1. Major Business (Sale & Search)



GEF's Equipment sales and equipment search

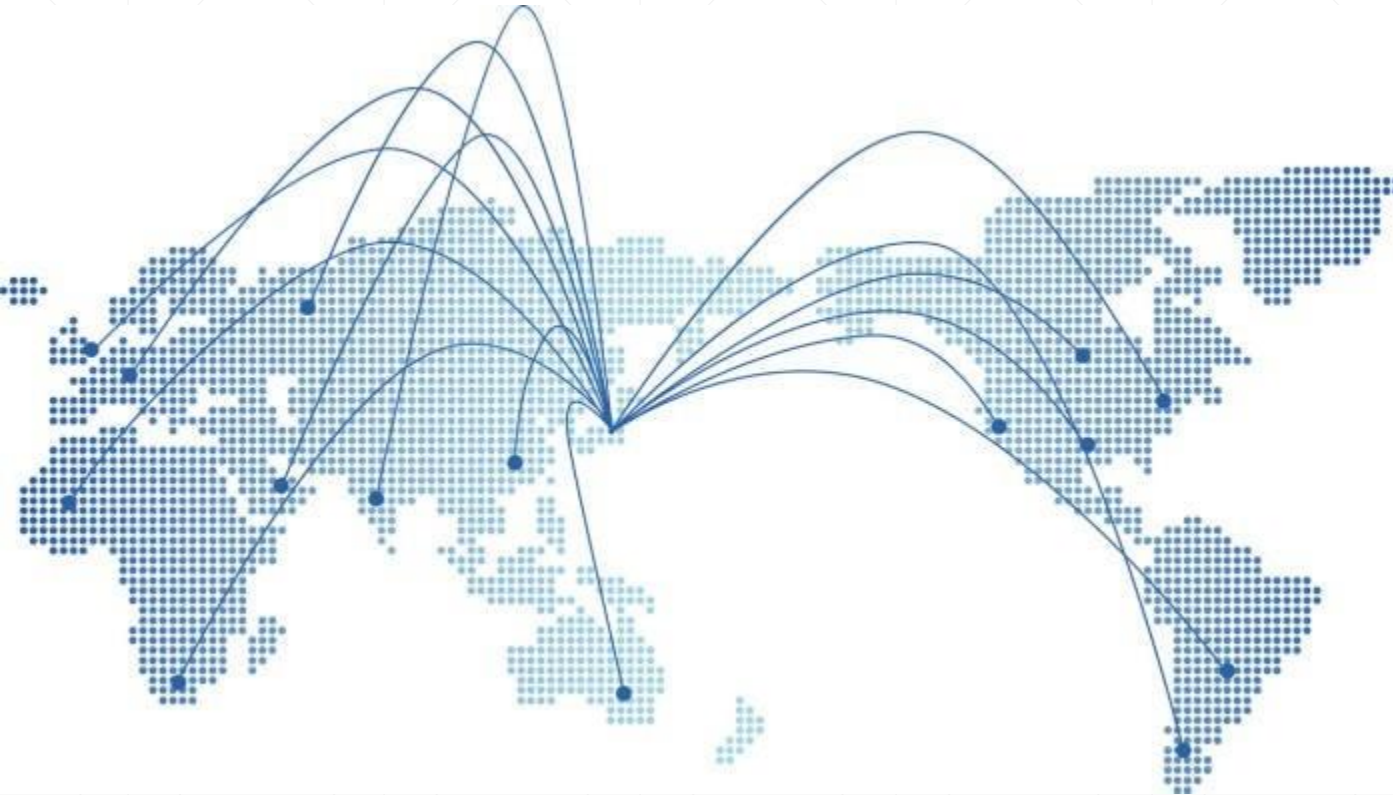
- Equipment sales
- Equipment search
- Parts sales & search

TEL, AMAT, LAM, CANON, NIKON, ASML, and company inventory items

Search based on customer needs

According to the company's internal inventory ,
Search based on customer needs

3. Business Professionalism



The company's sales department has people who can speak English, Chinese and Japanese. The purpose is to overcome the language barrier between customers and us, as to achieve customer satisfaction.

3. Business Professionalism

A low-angle, upward-looking photograph of several modern skyscrapers with glass facades, reaching towards a blue sky with light clouds. The perspective creates a sense of height and architectural grandeur.

GEF is doing business with various companies based on trust and commitment.

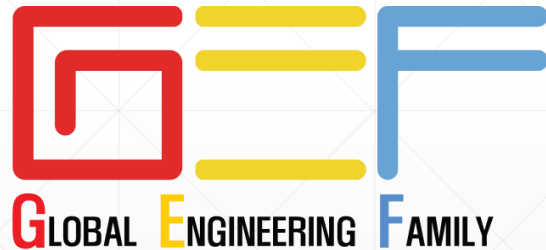
We will cherish the relationship between the companies we have once established, and we will try to win-win between the two sides, and we will continue to work hard to become a better company without losing our initial commitment.

Also, we will be a **GEF** that will remain in the memory of all our partners.

Thank you!



Contact Here



+82-31-221-8400



www.newgef.co.kr



inform@newgef.co.kr

Global Engineering Family

